



Great Marlow School
Excellence • Compassion • Integrity

Welcome to our Year 10 GCSE Information Evening

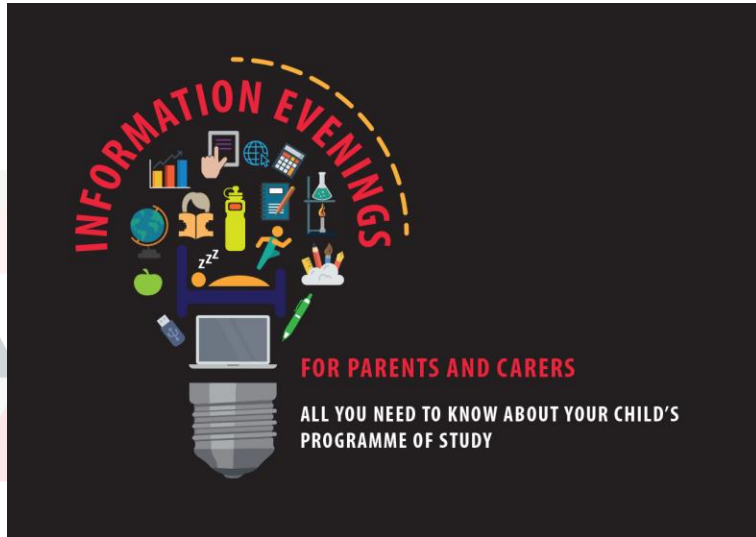
Thursday 5th September 2024

Opportunities are Created • Potential is Realised • Excellence is Achieved



Our Aims

- To give you an insight into changes at the beginning of KS4 and the expectations we have of students.
- To point you in the right direction of help and support that is available to you as a parent/carer.
- To inform you of the support on offer within school and opportunities for communication.



This PowerPoint will be available to view on the website under Parent & Carers >> Information Evenings

Year 10 Vision



My Personal Best

Students are self-motivated and take **responsibility** for their own learning.

Students show a **readiness** to learn and participate in the school day and school life. Students are punctual, polite and want to succeed.

Students are **resilient**, independent learners and to develop their organisational & time management skills.

Students demonstrate **resourcefulness** in order to overcome challenges and persevere when learning becomes more challenging.

Students **respect** the school environment, their peers and the wider school community

Students are **reflective** of their learning and actions and actively seek help and support when it is required.

Year 10 Vision & Values



Great Marlow School
Excellence • Compassion • Integrity

Ultimate aim: To ensure all students achieve Excellent or Good in all their Attitude to Learning Scores

- Year 10s are identified as **compassionate, respectful** and **resilient** members of the school community
- All students feel confident in taking **responsibility** for their GCSE studies
- Good communication between all three stakeholders - PARENTS/CARERS, STUDENTS and SCHOOL

KS4 Curriculum



Grading System

- **GCSE students work towards Grades 9-1**

9

8

7

High Achievement

6

5

Strong Pass

4

Standard Pass

3

2

1

U

Ungraded

- **Allows for greater identification of exceptional performance at the top end.**
- **Allows differentiation across passed grades.**
- **Employers can identify if students have taken new more challenging GCSE, or an old reformed GCSE.**

Curriculum changes



Great Marlow School

Excellence • Compassion • Integrity

Core subjects

English: taught in houses Eagles, Hawks and Kites.
Students are set by ability (sets 1, 2 and 3).

Maths: taught in houses.

Students are taught in mixed ability groups (groups 1 and 2).
Teaching groups 3 are set and study for the Foundation paper.

Science: taught in houses.

Students are taught in mixed ability groups (groups 2 and 3).
Teaching groups 1 are set and study for the additional Science GCSE.

Core PE for all students; set, as previously, dependent on skills displayed.

GCSE Options Classes



Great Marlow School
Excellence • Compassion • Integrity

Class grouping depends only on the combination of options chosen.

Students will be taught in mixed-ability groups with peers from across the cohort.

Classroom teaching is differentiated to support, stretch and challenge all learners.

For information about the different GCSE exam boards and courses there is an information booklet available on the website to access.

GMS homepage – About us – GCSE Options Information

Learning Ladders

For information on the learning journey of your child(ren) please see our new Learning Ladders on the school website. These are available under the "curriculum" tab

Great Marlow School
Excellence • Compassion • Integrity

Bobmore Lane, Marlow, Buckinghamshire SL7 1JE
Telephone - 01628 483 752
Company Registration No.07690054

Welcome ▸ News & Events ▸ About Us ▸ School Life ▸ 6th Form ▸ Curriculum ▸ Parent & Carers ▸ Student Area ▸ Sport ▸ Gallery

Departments A-Z

- Ancient History
- Art & Design
- Business
- Citizenship, PSHE & Politics
- Computer Science
- Design & Technology
- Drama
- English
- French
- Geography
- History
- Law
- Mathematics
- Media Studies

Curriculum Structure
Departments A-Z
Detentions
Examinations Information
Homework
School Day Timetable

Welcome ▸ News & Events ▸ About Us ▸ School Life ▸ 6th Form ▸ Curriculum ▸ Parent & Carers ▸ Student Area ▸ Sport ▸ Gallery

Geography Department

ABOUT GEOGRAPHY

Geography is the study of the Earth's landscapes, people, places and environments. Stated simply, it is about the world in which we live. Geography builds many of the physical concepts studied in science and investigates the impact of these on the world's people.

Geography links this understanding of human and physical processes to places and regions - recognising the big differences in cultures, economies and environments across the world. Understanding the causes of differences and inequalities between places and people are a key part of modern geography.

Geography provides an ideal framework for relating other subject areas. It is not surprising that those trained as geographers are often involved in global decision-making, such as politics or working to manage the challenges of climate change and sustainable development.



Adapted from the Royal Geographical Society

Geography at Great Marlow School

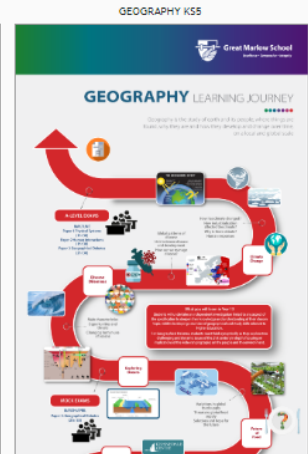
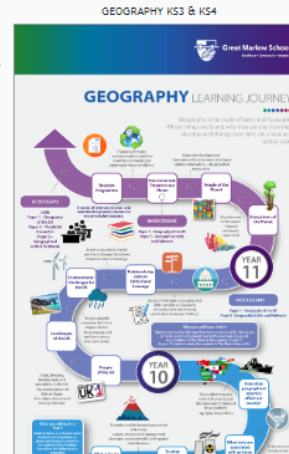
Learning Ladders

Key Stage 3 Geography

Key Stage 4 Geography

Key Stage 5 Geography

Career Options in Geography



Religious Studies drop-down sessions



Great Marlow School

Excellence • Compassion • Integrity

- Students will participate in 3 two-hour 'drop-down' sessions
- Utilise discussion, debate and problem-solving
- Aims to support the wider vision and values of the school
- Meets our statutory obligations by;
 - ✓ Inspiring students to be compassionate contributors to a better society
 - ✓ Demonstrating 'My Personal Best' with particular focus on: reflection, resilience and respect

Y10 work place
experience day in
July - TBC

Session 1	Session 2	Session 3
Friday 27 th September 2024, periods 1 & 2 Theme: Religion, families, education and freedom of speech/ thought	Monday 13 th January 2024, periods 1 & 2 Theme: Religious diversity within the UK	Tuesday 15 th July, periods 1 & 2 Theme: Religious and secular views on what makes us human

Support for students



Year 10 Student Support



Great Marlow School

Excellence • Compassion • Integrity

Miss H Hyde Student Support Officer for Year 9

Located in the KS4 Student Support Office

Continued strong relationship with cohort

- Consistent support given
- Consistent communication home
- Shared location with Mr Taylor

Mr S Taylor

Director of Learning Year 10

staylor@gms.bucks.sch.uk

Opportunities are Created • Potential is Realised • Excellence is Achieved

Key Staff Members



Great Marlow School

Excellence • Compassion • Integrity

Neil Maguire

Designated Safeguarding
Lead (DSL)



Karen Craig

Deputy DSL



Anna Gifford

Safeguarding Officer
(Designated Looked After)



Kevin Ford

Safeguarding
Headteacher



Sheryl Paul

Safeguarding Officer
(Mental Health Lead)



Opportunities are Created • Potential is Realised • Excellence is Achieved

Student Support



Great Marlow School
Excellence • Compassion • Integrity

Assistant Headteacher & Director of Inclusion (Special Educational Needs): Mrs V Todd

Attendance Officer: Mrs S Radnedge

Pupil Premium Coordinator: Mrs A Gifford

Careers Officer: Mrs M Brunt

The Year 10 Tutor team remains mostly the same.

This year, we welcome Mrs Harvey and welcome back Mrs Messenger to the team!

Opportunities are Created • Potential is Realised • Excellence is Achieved

Form Tutors

10K1 – Mr Taylor

ntaylor@gms.bucks.sch.uk

10H1 – Mr Jones

djones@gms.bucks.sch.uk

10E1 – Mr Pusey

hdale@gms.bucks.sch.uk

10K2 – Mr Horler

phorler@gms.bucks.sch.uk

10H2 – Miss Porter

lporter@gms.bucks.sch.uk

10E2 – Mrs Clark / Mrs Harvey

cclark@gms.bucks.sch.uk
dharvey@gms.bucks.sch.uk

**10K3 – Mrs Messenger/
Mr Merreywether**

nmessenger@gms.bucks.sch.uk
smerrywether@gms.bucks.sch.uk

**10H3 – Miss
Goodenough**

cgoodeneough@gms.bucks.sch.uk

10E3 – Mrs Singh

psingh@gms.bucks.sch.uk

First point of contact

Safeguarding and Wellbeing



From ASH (Action on smoking and Health)

- In 2023 20.5% of children had tried vaping, up from 15.8% in 2022 and 13.9% in 2020. 2024 figures will be even higher.
- Vaping – can contain harmful and potentially harmful substances, including:
 - Nicotine
 - Ultrafine particles that can be inhaled deep into the lungs
 - Flavourings such as diacetyl, a chemical linked to a serious lung disease
 - Volatile organic compounds
 - Cancer-causing chemicals
 - Heavy metals such as nickel, tin, and lead
 - SPICE – 1 in 5 illegal vapes contain other substances other than advertised

Safeguarding and Wellbeing



- Online Safety – nationalonlinesafety.co.uk
- As parents be curious – Content, Contact, Conduct and Commerce
- Age limits are in place for a reason
- Less is more



Safeguarding and Wellbeing



Bucks Mental Health Partnership

To help support the Mental Health of our young people, Great Marlow has teamed up with the Bucks Mental Health Support Team (MHST).

Workshop evenings

Promoting positive behaviours - Tuesday 8th October 6pm

Anxiety - Wednesday 4th December 6pm

Low mood - Monday 3rd March 6pm

Self-harm - Wednesday 30th April 6pm

Details of how to sign up for the in person Parent Sessions delivered by MHST will follow in a separate correspondence from Mrs. Paul.

Safeguarding and Wellbeing



Sleep is Key

- The developing brain of a teenager needs between eight and 10 hours of sleep every night. The effects of chronic (ongoing) sleep deprivation may include: concentration difficulties. mentally 'drifting off' in class.
- Routines and habits
- Reduce screen time before bed

Homework Setting





Planners

Students to note ALL homework and deadlines in their planners when set.

Microsoft Teams

Staff to post homework assignment details on MS Teams – calendar

Parents

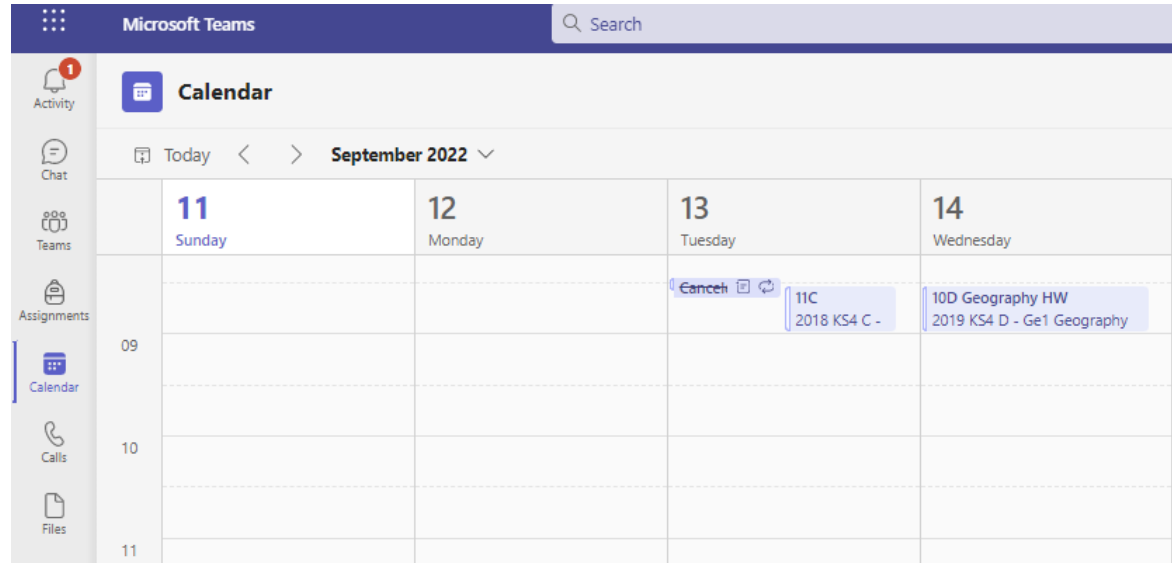
Encourage completion of homework to the best of the student's ability

Microsoft Teams



What is Microsoft Teams?

- It is used for the setting of assignments and the marking of work
- Calendar function provides useful overview of when homework is due in



1:1 Devices

The use of technology is embedded into many of our school subjects and whilst we have a some devices in departments for student use, it is highly beneficial to the students to have access to their own device. This is not essential.

We recommend a device that is able to run the Microsoft 365 programmes. Subscription to this is free to the student and linked to their school login.

Tutor Time





Year 10 Form Timetable

Mon

Equipment,
planner &
uniform
check



Tues

TFTW / Form
tutor activity
/ RSHE



Wed

Reading
project



Thurs

Assembly



Fri

News day

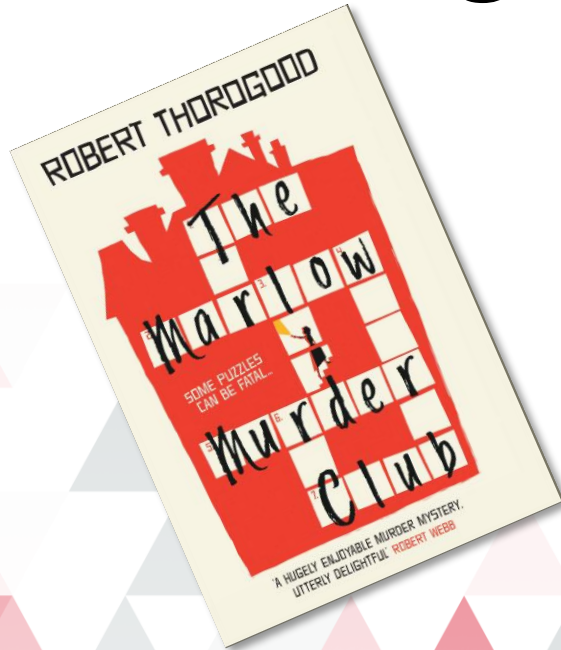


GMS Reading Project



Great Marlow School

Excellence • Compassion • Integrity



- Year 10 reading project books
- The reading project is all about exposure to a range of authors, genres and language
- A growing number of academic studies show that promoting reading can have a major impact on children and adults and their future
- A reminder that these are not the GCSE exam texts

RSHE

Relationships, Sex and Health Education

One lesson per week (with form tutor and one other teacher).



Great Marlow School

Excellence • Compassion • Integrity

Program of Study for Year 10

September – October – Mental Health

November – Vaping

December – Kindness

January – February – Violence, Knife Crime & Modern-Day Slavery

March – June: Marriage and Sexual Relationships

June – July: Revision Skills

Uniform & Equipment Reminders



Uniform & Equipment



- **Hair** – No extreme styles or unnatural looking colours
- **Nails** – Nude colours only, no false/acrylic nails
- **Jewellery** – One simple ring, a single stud in each ear (each removed for PE)
- **Skirts** – Not rolled at the waistband, logo clearly displayed
- **Shoes** – Smart and black, not trainers or trainer-style
- **Sports equipment** – in a bag, only used in designated areas at specified times.
- **Trousers** – not jeans
- **Jumpers** – Black V neck jumper, no branded sweatshirts or hoodies. Jumper is an additional layer – blazer must be worn
- **Blazers** – To be worn every day, COATS must be worn over the top if required
- **Tie** – worn every day



Essentials

- Planner
- Pencil
- Pen x2
- Ruler
- Glue stick
- Calculator

A note from home is needed for any reason that you are unable to wear the appropriate uniform – this will then be considered by tutor/DoL

Attendance & lates

Every school day matters!



Good attendance and punctuality underpin everything that we do.

90% attendance means up to 4 hours learning missed every week plus homework and preparation for controlled assessments.

1. If you are late to school, there will be a sanction of a 15 minute break detention
2. If you fail to attend, you will have a 30 minute after school detention on the next Thursday
3. If you fail to attend, you will have a 1hr after school detention on the Friday



Attend Today, Achieve Tomorrow

Attendance and Legislation

New Statutory Duty for Attendance from 19.08.2024 - [Information for Parents](#)

- Any holiday-related absence taken that includes 10 sessions in 10 weeks, may result in a Penalty Notice. In this instance, a 'Notice to Improve' notification will not be issued beforehand.
- We recognise that these Penalty Notices may be unpopular with families, but it is important to inform you of these changes promptly.
- Nationally, Headteachers are:
 - not permitted to approve term-time holidays except in genuinely exceptional circumstances, and
 - are to consider each application for a leave of absence individually before making our decision.
- The law clearly expects Headteachers to enforce these penalties strictly.

Important Dates



Important Dates



Great Marlow School

Excellence • Compassion • Integrity

School Google Calendar

Today | September 2023 | Print | Week | Month | Agenda

Mon	Tue	Wed	Thu	Fri	Sat	Sun
28	29	30	31	1 Sept	2	3
SUMMER HOLIDAYS						
AUGUST BANK HO						
4	5	6	7	8	9	10
	Catering Fingerpr START OF TERM Y7	ALL STUDENTS BA	School Health Adv Y10 Parent / Carer	Y13 Geography Residential: Cranedale; departure 6 am Fri FoGMS; Y7 Parents MIDAS minibus tra		
11	12	13	14	15	16	17
Y13 Geography R MIDAS minibus tra	MIDAS minibus tra Y9 Parent / Carer 1	MIDAS minibus tra Y8 Parent / Carer 1	Y11 Parent / Carer	Y7 Author Q&A Se		
18	19	20	21	22	23	24
	Y7 Parent / Carer 1	FoGMS AGM & Me	Jeans For Genes - School Health Adv Y6 Open Evening (Y11 Geography Tri		
25	26	27	28	29	30	1 Oct
Y11 Drama GCSE	Y7 Sustainable Fas	DEaR p3 Y6 Open Morning (School photos: Y7 An Evening with Je	Staff Fit Friday 3:4 Y10 RS Curriculum Y6 Open Morning (

Events shown in time zone: United Kingdom Time

+ Google Calendar

https://www.gms.bucks.sch.uk/?page_id=409

Important Dates



Great Marlow School

Excellence • Compassion • Integrity

Thursday 5th September – ***Y10 Information Evening***

Friday 8th November – ***Y10 Autumn Progress Reviews sent home***

Friday 28th March - ***Y10 Spring Progress Reviews sent home***

Monday 31st March – ***Y10 Deadline for Prefect Applications***

Tuesday 1st April – ***Y10 Parent/Carer Evening***

Monday 9th – Monday 30th June – ***Y10 Mock Exams***

Wednesday 16th July - ***Y10 Summer Progress Reviews sent home***

Progress Reports



Great Marlow School
Excellence • Compassion • Integrity

First one of autumn term- ATL and AFD **only**

After that students' target grades and predicted grades will be on their progress reports

Predicted grade - If the student continues to work at the level they are working now, this is the grade we believe they will get in their exams in 2024

Prefects



Great Marlow School

Excellence • Compassion • Integrity

Responsibilities:

- Two duties per week
- Transition day support
- Open evenings support
- School events

Application in Spring term:

- Job advert on GMS website
- All students produce CV
- Letter of application to DoL

Second round of application later in year

Opportunities are Created • Potential is Realised • Excellence is Achieved

Communication



Form Tutors

10K1 – Mr Taylor

ntaylor@gms.bucks.sch.uk

10H1 – Mr Jones

djones@gms.bucks.sch.uk

10E1 – Mr Pusey

hdale@gms.bucks.sch.uk

10K2 – Mr Horler

phorler@gms.bucks.sch.uk

10H2 – Miss Porter

lporter@gms.bucks.sch.uk

10E2 – Mrs Clark / Mrs Harvey

cclark@gms.bucks.sch.uk
dharvey@gms.bucks.sch.uk

**10K3 – Mrs Messenger/
Mr Merreywether**

nmessenger@gms.bucks.sch.uk
smerrywether@gms.bucks.sch.uk

**10H3 – Miss
Goodenough**

cgoodeneough@gms.bucks.sch.uk

10E3 – Mrs Singh

psingh@gms.bucks.sch.uk

First point of contact

Website



Great Marlow School

Excellence • Compassion • Integrity

The screenshot shows the Great Marlow School website homepage. At the top, there is a navigation menu with links for Welcome, News & Events, About Us, School Life, 6th Form, Curriculum, Parent & Carers, Student Area, Sport, and Gallery. Below the navigation is a large banner image of students in school uniforms. The main content area features a search bar, a section for GMS Safeguarding with icons for Parent Internet Safety and Student Online Safety, and a section for Links including Teacher Training, CPOMS Login, Google Search, MS 365 Apps, MS 365 Email, School Google Calendar, and Examinations Information. There are also several news articles, including one about Open Evening and Open Mornings, and another about Eco-Warriors Gardening.

Keep up to date with GMS news, achievements and events on the Great Marlow School website.

[Link to school website...](#)

Opportunities are Created • Potential is Realised • Excellence is Achieved

FoGMS



Great Marlow School

Excellence • Compassion • Integrity

Great Marlow School
Excellence • Compassion • Integrity

Bobmore Lane, Marlow, Buckinghamshire SL7 1JE
Telephone - 01628 483 752
Company Registration No.07690054

Welcome » News & Events » About Us » School Life » 6th Form » Curriculum » **Parent & Carers »** Student Area » Sport » Gallery

Friends of Great Marlow School

- ☉ [Donate to FoGMS >>](#)
- ☉ [For FoGMS News click here](#)
- ☉ [Contact: fogmschair@gmail.com](mailto:fogmschair@gmail.com)



All parents and carers are automatically members of Friends of Great Marlow School (FoGMS). FoGMS is an organisation that actively fundraises for the benefit of all the students in the school.

The association has helped raise large sums of money to provide facilities and equipment for GMS, which it could not otherwise afford.

At key points in the year, social and educational functions occur for parents, carers, staff and the wider community.



FoGMS principal role is to promote a strong understanding and co-operation between home and school. It is a way for parents and carers to become actively involved in the school.

The most popular events of the past year were: Christmas Fayre, Comedy Evening, Year 7 Disco and Car Boot Sales.



The Friends of Great Marlow School also play an important role in helping at school events such as Open Evening, school productions and other performances.



Opportunities are Created • Potential is Realised • Excellence is Achieved

Our Roles



Our Roles



Great Marlow School

Excellence • Compassion • Integrity

I Will...

- Reward students
- Support students
- Educate students
- Monitor progress
- Communicate openly
- Respond as soon as able

Form Tutors will...

- Be your first point of contact
- Utilise form time
- Celebrate successes
- Support progress
- Communicate effectively
- Work closely with DoL and SSO

You can...

- Monitor Progress
- Have open and honest conversations
- Monitor and support with homework
- Encourage good habits
- Discuss student experiences

Opportunities are Created • Potential is Realised • Excellence is Achieved

My commitment to you...



Great Marlow School
Excellence • Compassion • Integrity

- ✓ ***You are never bothering me.***
- ✓ *I will usually respond to communication within 24 hours*
- ✓ *You might not get the outcome you intended, but I will always provide one with the interests of the students at the forefront of my mind*



staylor@gms.bucks.sch.uk