



Great Marlow School

Excellence • Compassion • Integrity

Welcome to the Year 8
Parents' and Carers'
Information Evening

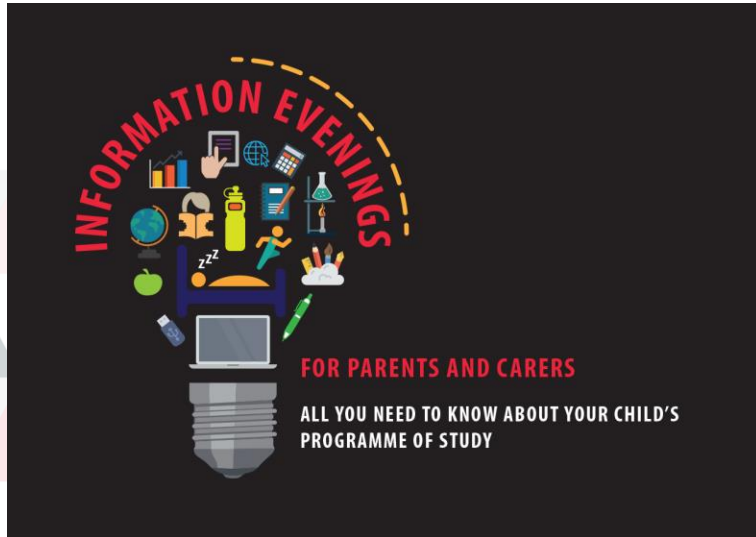
Wednesday 11th September 2024

Opportunities are Created • Potential is Realised • Excellence is Achieved



Our Aims

- To give you an insight into changes in Year 8 and the expectations we have of students.
- To point you in the right direction of help and support that is available to you as a parent/carer.
- To inform you of the support on offer within school and opportunities for communication.

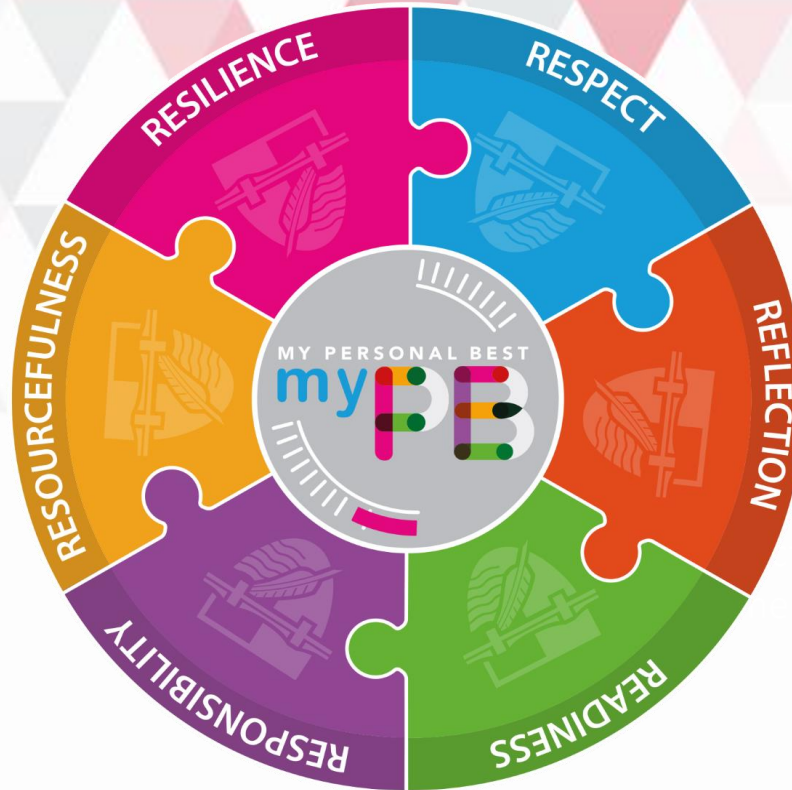


This PowerPoint will be available to view on the website under Parent & Carers >> Information Evenings

Year 8 Vision and Values



My Personal Best



Be a reflective
thinker and
communicator
who can
communicate
effectively

A simple mantra...



Year 8 Vision & Values



Great Marlow School
Excellence • Compassion • Integrity

Ultimate aim: To ensure all students achieve Excellent or Good in all their Attitude to Learning Scores

- Year 8s are identified as **compassionate, respectful** and **resilient** members of the school community
- All students feel confident in taking **responsibility** for their academic, emotional and social development
- Good communication between all **three** stakeholders - PARENTS/CARERS, STUDENTS and SCHOOL

Student Support





Year 8 Student Support



Miss Blanco-Rand

Located in the KS3 Student Support Office (S block)

Continued strong relationship with cohort

- Consistent support given
- Consistent communication home
- Shared location with Miss A Miles

Year 8 Tutor Team

8H1: Mr N Sienes nsienes@gms.bucks.sch.uk

8H2 Mr D Taylor dtaylor@gms.bucks.sch.uk

8H3 Mr G Pightling gpightling@gms.bucks.sch.uk

8E1 Miss A Winter awinter@gms.bucks.sch.uk

8E2 Miss A Sawney asawney@gms.bucks.sch.uk

8E3 Mrs Gennery & Mrs J Hayward cgennery@gms.bucks.sch.uk

8K1 Miss J Moyse & Mrs Day-Lewis jmoyse@gms.bucks.sch.uk

8K2 Mrs Ralphs-Cole lralphs-cole@gms.bucks.sch.uk

8K3 Mr H Magnay hmagnay@gms.bucks.sch.uk

The Year 8 Tutor team remains mostly the same!

This year, **Mrs Ralphs-Cole** joins the team as the sole tutor for 8K2.

Mrs Day-Lewis will support Miss Moyse with 8K1 on Fridays, while **Mrs Hayward** will support 8E3 on Wednesdays



Pupil Premium



Great Marlow School

Excellence • Compassion • Integrity



**Pupil Premium Coordinator &
Safeguarding Officer:**

Mrs A Gifford

agifford@gms.bucks.sch.uk

Opportunities are Created • Potential is Realised • Excellence is Achieved

Student Support



Great Marlow School
Excellence • Compassion • Integrity

Assistant Headteacher & Director of Inclusion

(Special Educational Needs): Mrs V Todd senco@gms.bucks.sch.uk

Attendance Officer: Mrs S Radnedge attendance@gms.bucks.sch.uk

Pupil Premium Coordinator: Mrs A Gifford agifford@gms.bucks.sch.uk

General Information: info@gms.bucks.sch.uk / **01628 483752**

School Website: www.gms.bucks.sch.uk

Safeguarding: safeguarding@gms.bucks.sch.uk

Safeguarding



Key Staff Members



Great Marlow School

Excellence • Compassion • Integrity

Neil Maguire

Deputy Headteacher
Designated Safeguarding
Lead (DSL)



Karen Craig

Assistant Headteacher
Deputy DSL



Anna Gifford

Safeguarding Officer
(Designated Looked After)



Kevin Ford

Headteacher
Safeguarding



Sheryl Paul

Safeguarding Officer
(Mental Health Lead)



Opportunities are Created • Potential is Realised • Excellence is Achieved

Attendance and Legislation

New Statutory Duty for Attendance from 19.08.2024 - [Information for Parents](#)

- Any holiday-related absence taken that includes 10 sessions in 10 weeks, may result in a Penalty Notice. In this instance, a 'Notice to Improve' notification will not be issued beforehand.
- We recognise that these Penalty Notices may be unpopular with families, but it is important to inform you of these changes promptly.
- Nationally, Headteachers are:
 - not permitted to approve term-time holidays except in genuinely exceptional circumstances, and
 - are to consider each application for a leave of absence individually before making our decision.
- The law clearly expects Headteachers to enforce these penalties strictly.
- GMS are currently reviewing our Attendance Policy – will be shared

Safeguarding and Wellbeing



From ASH (Action on smoking and Health)

- In 2023 20.5% of children had tried vaping, up from 15.8% in 2022 and 13.9% in 2020. 2024 figures will be even higher.
- Vaping – can contain harmful and potentially harmful substances, including:
 - Nicotine
 - Flavourings such as diacetyl, a chemical linked to a serious lung disease
 - Volatile compounds
 - Cancer-causing chemicals
 - Heavy metals such as nickel, tin, and lead
 - SPICE – 1 in 5 illegal vapes contain other substances other than advertised

Safeguarding and Wellbeing



- Online Safety – nationalonlinesafety.co.uk – free resource for parents/carers
- As parents be curious – Content, Contact, Conduct and Commerce
- Age limits are in place for a reason
- Less is more – less time online is healthier
- Screen time should be reduced before sleep routine



Safeguarding and Wellbeing



Sleep is Key

- The developing brain of a teenager needs between 8 and 10 hours of sleep every night.

Impactful Sleep Hygiene Practices

- Establish a nighttime routine**: Represented by an icon of a nightstand with a lamp and a clock.
- Get up and go to sleep at the same time**: Represented by an icon of a red alarm clock.
- Create a healthy sleep environment**: Represented by an icon of a desk lamp.
- Turn off electronics an hour before bed**: Represented by an icon of a smartphone displaying '10:30' and 'DO NOT DISTURB ON'.
- Limit caffeine**: Represented by an icon of a coffee cup with a red prohibition sign over it.
- Exercise**: Represented by an icon of two dumbbells.
- Reduce stress**: Represented by an icon of a person in a yoga pose.
- Avoid large, fatty meals prior to sleeping**: Represented by an icon of a McDonald's meal (burger, fries, and a drink) with a red 'X' over it.

verywell

Safeguarding and Wellbeing



Bucks Mental Health Partnership

To help support the Mental Health of our young people, Great Marlow has teamed up with the Bucks Mental Health Support Team (MHST).

Workshop evenings

Promoting positive behaviours - Tuesday 8th October 6pm

Anxiety - Wednesday 4th December 6pm

Low mood - Monday 3rd March 6pm

Self-harm - Wednesday 30th April 6pm

Details of how to sign up for the in person Parent Sessions delivered by MHST will follow in a separate correspondence from Mrs. Paul.

Curriculum and Homework Setting



Curriculum



Great Marlow School
Excellence • Compassion • Integrity

All subjects are taught in their mixed ability form groups- Eagles, Hawks and Kites.

English- groups are set based on Y7 data (opportunities to change sets)

Maths- no streaming (B3 daily drop-ins at break 1 and Sparx Club afterschool on Tuesdays)

Core PE for all students; set dependent on skills displayed.

RSHE (Relationships, Sex and Health Education)

- One lesson per fortnight (taught by form tutor).
- Covers important topics such as; Mental wellbeing and health, sex and relationships, managing money, careers and other life skills.

Departmental Queries



Great Marlow School

Excellence • Compassion • Integrity

For subject teacher or departmental queries, please liaise with your child's form tutor in the first instance. They will be able to direct you to the right contact.

- ❖ **Head of English:** Miss Timon (rtimon@gms.bucks.sch.uk)
- ❖ **Head of Maths:** Mrs Guy (mguy@gms.bucks.sch.uk)
- ❖ **Head of Science:** Mrs Webster (jwebster@gms.bucks.sch.uk)

RSHE

Relationships, Sex and Health Education




Great Marlow School

Excellence • Compassion • Integrity

Programme of Study for Year 8

- **Autumn Term: Mental health and wellbeing, drugs and alcohol**
- **Spring Term: Healthy relationships, online relationships, self care, identity and diversity**
- **Summer Term: Identity and diversity, sex education and relationships,**

Learning Ladders



Great Marlow School
Excellence • Compassion • Integrity

Bobmore Lane, Marlow, Buckinghamshire SL7 1JE
Telephone - 01628 483 752
Company Registration No.07690054

Welcome » News & Events » About Us » School Life » 6th Form » Curriculum » Parent & Carers » Student Area » Sport » Gallery

Departments A-Z

- Ancient History
- Art & Design
- Business
- Citizenship, PSHE & Politics
- Computer Science
- Design & Technology
- Drama
- English
- French
- Geography
- History
- Law
- Mathematics
- Media Studies

Curriculum Structure
Departments A-Z
Detentions
Examinations Information
Homework
School Day Timetable

Geography Department

ABOUT GEOGRAPHY

Geography is the study of the Earth's landscapes, people, places and environments. Stated simply, it is about the world in which we live. Geography builds many of the physical concepts studied in science and investigates the impact of these on the world's people.

Geography links this understanding of human and physical processes to places and regions - recognising the big differences in cultures, economies and environments across the world. Understanding the causes of differences and inequalities between places and people are a key part of modern geography.

Geography provides an ideal framework for relating other subject areas. It is not surprising that those trained as geographers are often involved in global decision-making, such as politics or working to manage the challenges of climate change and sustainable development.



Adapted from the Royal Geographical Society

Geography at Great Marlow School

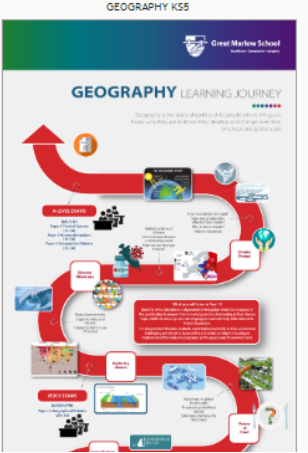
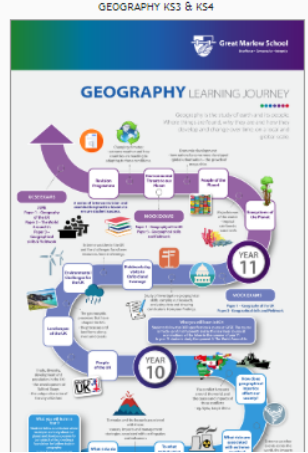
Learning Ladders

Key Stage 3 Geography

Key Stage 4 Geography

Key Stage 5 Geography

Career Options in Geography





Planners

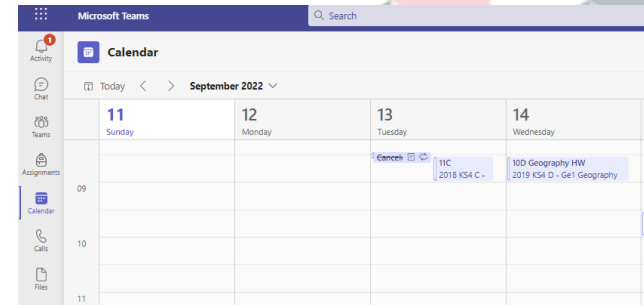
Students to note ALL homework and deadlines in their planners when set.

Microsoft Teams

Staff to post homework assignment details on MS Teams – calendar

Parents

Encourage completion of homework to the best of the student's ability



Uniform & Equipment Reminders



Uniform & Equipment



- **Hair** – No extreme styles or unnatural looking colours
- **Nails** – Nude colours only, no false/acrylic nails
- **Jewellery** – One simple ring, a single stud in each ear (each removed for PE)
- **Skirts** – Not rolled at the waistband, logo clearly displayed
- **Shoes** – Smart and black, not trainers or trainer-style
- **Sports equipment** – in a bag, only used in designated areas at specified times.
- **Trousers** – not jeans
- **Jumpers** – Black V neck jumper, no branded sweatshirts or hoodies. Jumper is an additional layer – blazer must be worn
- **Blazers** – To be worn every day, COATS must be worn over the top if required
- **Tie** – worn every day

A note from home is needed for any reason that you are unable to wear the appropriate uniform – this will then be considered by tutor/DoL

Attendance & Lates

Every school day matters!

Good attendance and punctuality underpin everything that we do.

Scenario - 90% attendance to school...

- Across 11 years in education, you would only be in school for 1871 days of the 2079 days you are expected to be in school
- This equates to 208 days of absence from school; that is more than an entire academic year....and that means... well, you can probably work that out!

96% is our school target

Late System Policy

1. If you are late to school, there will be a sanction of one same day 15-minute break detention
2. If you fail to attend, you will have a 30 minute after school detention on the following Thursday
3. If you fail to attend, you will have a 1hr after school detention on the Friday



Tutor Time



School Day: Timings



Great Marlow School

Excellence • Compassion • Integrity

8:25 am Arrive through the green gates

8:30am Registration

9 – 10am Lesson 1

10 - 11am Lesson 2

11 - 11:30am Break 1 (canteen – DT entrance)

11:30 - 12:30pm Lesson 3

12:30 - 1pm Break 2

1 – 2pm Lesson 4

2 – 3pm Lesson 5

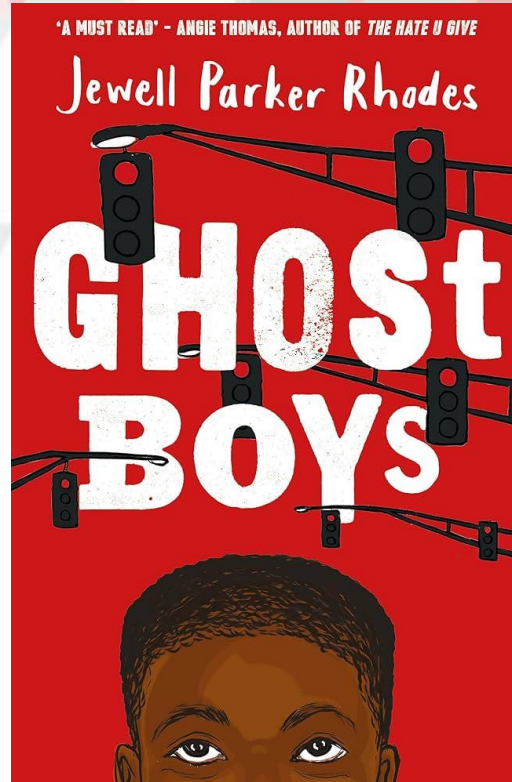
Opportunities are Created • Potential is Realised • Excellence is Achieved

Y8 Tutor Time

MONDAY	TUESDAY	WEDNESDAY	THURSDAY	FRIDAY
 <p>Readiness Checks</p>	 <p>ASSEMBLY & Uniform Check</p>	 <p>Thought for the week . . .</p>	 <p>reading. PROJECT ...our 7th 'r'</p>	<p>FUN FRIDAY</p>  <p>THE NEWS QUIZ</p>
 <p>readiness</p>	 <p>respect</p>	 <p>reflection</p>	 <p>resilience</p>	



GMS Reading Project



The reading project is all about exposure to a range of authors, genres and language

Year 8 are read to by their form tutor (Thursday form times) and English teacher (at the start of most lessons)

In Autumn, we will be starting with **Ghost Boys**

Important Dates and Events



The School Calendar



Great Marlow School

Excellence • Compassion • Integrity

Today ◀ ▶ September 2024 Print Week Month Agenda

Mon	Tue	Wed	Thu	Fri	Sat	Sun
26	27	28	29	30	31	1 Sept
SUMMER HOLIDAYS						
AUGUST BANK HO						
2	3	4	5	6	7	8
INSET Days		Catering F	SCHOOL CLOSURES 12.30 pm			
Week 1		START OF	When Thursday, 19 Sept 2024			
		LT Meeting	more details» copy to my calendar»			
9	10					15
Y12/13 Parent / Ce	Y9 Parent / Carer I	Y8 Parent				
New Staff Meeting	Associate Staff Me	Tutor Meet				
Week 2		LT Meeting 3:15 -				
16	17	18	19	20	21	22
Y7 Parent / Carer I	FoGMS AGM and c		Jeans for Genes	Y13 Geography Residential: Cranedale; departure 6 am Fi;		
New Staff Meeting	Trustees Monitorin		SCHOOL CLOSURES 1			
Week 1		T&L Meeting 3:15	Y6 Open Evening (
	Y10 Art; Borough	LT Meeting 1 - 3 pm				
23	24	25	26	27	28	29
Y13 Geography R	Visit from St Bede'	Y6 Open Morning (School photos: Y7	Staff Fit Friday 3:4		
Trustees: Academy	LT Meeting 3:15 -	LDG Meeting 3:15		Y10 RS Curriculum		
Trustees: Redgrave		Y13 History; Hamp		Y6 Open Morning (
+2 more						
30	1 Oct	2	3	4	5	6
Student Voice: Tutor Groups						Y11-13: Reading S
Y11/12/13 progres	Y12 / 13 Senior Ma	DEaR p3	Trustees: Admissio	QA DIP deadline	Y9-10: Avon Bluefi	
New Staff Meeting	Y12 RS Curriculum	LT Meeting 3:15 -	Dept Meeting 3:15	Y11 Geography Tri		
Week 1		Y6 Open Morning (

SCHOOL
GOOGLE
CALENDAR

Important Dates



Great Marlow School

Excellence • Compassion • Integrity

Y8 CALENDAR AND CONTACTS *MAY BE SUBJECT TO CHANGE*

September	October	November
<p>Thursday 19th- School closes at 12.30pm (Year 6 Open Evening) WB 30th- Student Voice (Tutor Groups)</p>	<p>WB 7th- Student Voice (Year Group) Thursday 17th- FoGMS Y8 Disco (7-9pm) Friday 25th-INSET Day HALF TERM (MONDAY 28TH- FRIDAY 1ST)</p>	<p>Monday 4th- Start of Autumn Term 2 (Week 1 Timetable) Friday 29th- Y8 Progress Reviews issued</p>
December	January	February
<p>Tuesday 3rd- Flu vaccinations (hall all day) Thursday 5th-Music at Marlow Late Night Shopping Thursday 12th- School Production 7pm Thursday 12th- GMS Christmas Carol Service 7-8.15pm (All Saints Church) Wednesday 18th- GMS Christmas Concert (school hall) 7-9pm Friday 20th- Last day of term. Non-uniform day. School closes at 12.30pm</p> <p>CHRISTMAS HOLIDAYS (MONDAY 23RD FRIDAY 3RD)</p>	<p>Monday 6th- Start of term (Week 2 Timetable) WB 20th- Student Voice (Tutor Groups) WB 27th- Student Voice (Year Group)</p>	<p>HALF TERM (MONDAY 17TH- FRIDAY 21ST) Monday 24th- Start of new half term (Week 2 Timetable)</p>
March	April	May
<p>Thursday 6th- World Book Day Friday 14th- Year 8 Progress Reviews Issued Friday 28th- Dance Show at 7pm</p>	<p>Friday 4th- Last day of term. Non-uniform day. School closes at 12.30pm EASTER HOLIDAYS (7TH- 18TH APRIL) Tuesday 22nd- Start of term (Week 2 Timetable) 24th-25th-GMS Sporting Challenge</p>	<p>Thursday 1st- Y7/8 Junior Maths Challenge Monday 5th- Bank Holiday Tuesday 6th- Jazz Evening MAY HALF TERM (MONDAY 26TH- FRIDAY 30TH)</p>
June	July	<p>Have a great summer! See you back in September '25 for the start of Year 9!</p>
<p>Monday 2nd- Start of half term (Week 1 Timetable) Friday 6th- Eco Day Monday 23rd- Y8 Progress Reviews issued Wednesday 25th- Y8 Virtual Parents/Carers Evening (3.30-7.30pm) Thursday 20th- Y7 Parent/Carer Information Evening (4.30-7.30pm)</p>	<p>Wednesday 2nd- GMS Summer Music Concert Thursday 3rd- Sports Day Wednesday 9th- KS3 Production Thursday 10th- Celebration of Success, 6.30pm Friday 12th- Sports Award Evening 7-10pm Friday 18th- END OF TERM. Non-uniform day. School closes at 12.30pm</p>	

Opportunities are Created • Potential is Realised • Excellence is Achieved

Progress Reports: Working At Grades



Great Marlow School

Excellence • Compassion • Integrity

First reports this year: Friday 29th November

Working At Standard							
YEAR 7	Foundation	Emerging	Secure	Advanced		Exceptional	
YEAR 8	Foundation		Emerging	Secure	Advanced	Exceptional	
YEAR 9	Foundation			Emerging	Secure	Adv	Exceptional

Rewards >

- Postcards home
- DOL Certificates
- Achievement Points
- Positive meetings with DOL/SSO

Communication



Y8 Tutors: Your 1st Point of Contact...

8H1: Mr N Sienes nsienes@gms.bucks.sch.uk

8H2 Mr D Taylor dtaylor@gms.bucks.sch.uk

8H3 Mr G Pightling gpightling@gms.bucks.sch.uk

8E1 Miss A Winter awinter@gms.bucks.sch.uk

8E2 Miss A Sawney asawney@gms.bucks.sch.uk

8E3 Mrs Gennery & Mrs J Hayward cgennery@gms.bucks.sch.uk

8K1 Miss J Moyse & Mrs Day-Lewis jmoyse@gms.bucks.sch.uk

8K2 Mrs Ralphs-Cole lralphs-cole@gms.bucks.sch.uk

8K3 Mr H Magnay hmagnay@gms.bucks.sch.uk



Great Marlow School
Excellence • Compassion • Integrity

Bobmore Lane, Marlow, Buckinghamshire SL7 1JE
Telephone - 01628 483 752
Company Registration No. 07690054

- Welcome
- News & Events
- About Us
- School Life
- 6th Form
- Curriculum
- Parent & Carers
- Student Area
- Sport
- Gallery

is a place where...



Autumn Term 2022

GMS welcomes all students back for the 2022 autumn term in September. Year 7, Year 10 and Year 12 return on Monday 5th September for registration at 8.35. All year groups are in school (Years 7-13) on Tuesday 6th September for registration at 8.35. Full school uniform with correct footwear is expected for all students in Years 7 to 11. Those in the Sixth Form must adhere to the Sixth Form dress...

Search Our Site

GMS Safeguarding

GMS SAFEGUARDING

PARENT INTERNET SAFETY | STUDENT ONLINE SAFETY

- Links
- Teacher Training
 - CPOMS Login
 - Google Search
 - MS 365 Apps | MS 365 Email
 - School Google Calendar
 - Examinations Information

Tanzania Charity



Here in GMS we support a charity that sponsors the schooling of children in Tanzania. We are delighted to hear that Martha, one of our children, is now in the first term of secondary school; in Tanzania there are two academic terms, commencing in January, so she is half way through her first year. She is doing quite well achieving Division III in her mid-term...

GCSE Information Evening



Mrs Webster, Director of Learning for Year 10, is inviting all Year 10 parents and carers to a GCSE Parent Information Evening on Thursday 8th September, from 6-6.45 pm in the main hall. The purpose of the evening is to give relevant and up to date information to about Year 10 so that support for students comes from home and school together. There will be an...



Great Marlow School
Excellence • Compassion • Integrity

[Link to school website...](#)



Website

Keep up to date with GMS achievements and events on the Great Marlow School website.



• Excellence is Achieved

FoGMS



Great Marlow School
Excellence • Compassion • Integrity

Friends of Great Marlow School (FoGMS) are a friendly group of parents and teachers whose aim is to support the children in the school through involving parents, carers and the wider community in fund raising events

FoGMS invite all parents/ carers to the first FoGMS meeting & AGM of this school year on:

Tuesday 17th September 6:30pm



A few examples of the many additional resources funded just in the past 3 years by FoGMS for all the students at GMS are:

- All inclusive **OUTDOOR SEATING** for the students to be able to sit, eat and relax in the school grounds
- Replacement of all the stage curtains and theatre tabs in the main school hall
- Gifted a book for all the incoming year 7's to enjoy a Summer read
- Purchased music stands, trollies and Djembe Drums for the Music Department which will be used by the whole school
- Final payment made for leases of the two minibuses at an annual cost of £11,040.
- PE cycling initiative which has proved incredibly popular with the students was given £3,250
- Purchased yoga mats for Miss Addy's after school yoga club
- A new projector in the drama department M10 room which is used by all students.
- A donation of £7,500 towards the new garden room reflection and learning space
- Logo/d sweatshirts for the Sports Leaders programme



Great Marlow School

Excellence • Compassion • Integrity

Bobmore Lane, Marlow, Buckinghamshire SL7 1JE

Telephone - 01628 483 752

Company Registration No.07690054

Welcome » News & Events » About Us » School Life » 6th Form » Curriculum » **Parent & Carers »** Student Area » Sport » Gallery

Friends of Great Marlow School

- ☉ [Donate to FoGMS >>](#)
- ☉ [For FoGMS News click here](#)
- ☉ [Contact: fogmschair@gmail.com](mailto:fogmschair@gmail.com)



All parents and carers are automatically members of Friends of Great Marlow School (FoGMS). FoGMS is an organisation that actively fundraises for the benefit of all the students in the school.

The association has helped raise large sums of money to provide facilities and equipment for GMS, which it could not otherwise afford.

At key points in the year, social and educational functions occur for parents, carers, staff and the wider community.



FoGMS principal role is to promote a strong understanding and co-operation between home and school. It is a way for parents and carers to become actively involved in the school.

The most popular events of the past year were: Christmas Fayre, Comedy Evening, Year 7 Disco and Car Boot Sales.

The Friends of Great Marlow School also play an important role in helping at school events such as Open Evening, school productions and other performances.

Our Roles



Our Roles



Great Marlow School
Excellence • Compassion • Integrity

I Will...

- ..reward students
- ..support students
- ..educate students
- ..monitor progress
- ..communicate openly
- ..respond as soon as able

Form Tutors will...

- ..be your first point of contact
- ..utilise form time
- ..celebrate successes
- ..support progress
- ..communicate effectively
- ..work closely with DoL and SSO

You can...

- ..monitor Progress
- ..have open and honest conversations
- ..monitor and support with homework
- ..encourage good habits
- ..discuss student experiences

Parental Support

- Ensure your child gets enough sleep (8 hours a night) and has a healthy breakfast to set them up positively for a school day
- Support your child to organise themselves for school (homework, packing their school bag)
- Have open and honest conversations with your child about their progress
- Communicate effectively with the school
- Road safety
- Support GMS to instill our core life skills:

Readiness

Resourcefulness

Reflection

Respect

Resilience

Responsibility



My commitment to you...



Great Marlow School
Excellence • Compassion • Integrity

- ✓ You are never bothering me.
- ✓ I will usually respond within 24 hours to communication.
- ✓ You might not get the outcome you intended, but I will always provide one with the interests of the students at the forefront of my mind

amiles@gms.bucks.sch.uk

Thank you



Great Marlow School

Excellence • Compassion • Integrity

Thank you for watching this presentation...

We look forward to working together with you to enable your son or daughter to achieve their full potential.

Opportunities are Created • Potential is Realised • Excellence is Achieved