



Great Marlow School

*Excellence • Compassion • Integrity*

# Year 11 Exam Information Evening

Tuesday 12<sup>th</sup> November 2024

Opportunities are Created • Potential is Realised • Excellence is Achieved

# Headline News

## Key Stage 4

Summer 24 results

% 9-7 = 16.0

% 9-5 = 54.7

% 9-4 = 73.8



# Core subjects

## **% students grade 4+ in:**

English 77.4%

Maths 74.8%

Science Trilogy 56.4%

Biology 98.4%

Chemistry 95.2%

Physics 96.8%



# Year 11 Vision & Values

## Ultimate aim: Get the Grade

This vision is aiming that all students know their goals and are prepared with a plan A, B and C for post-16 life.

- Year 11s are identified as **compassionate, respectful** and **resilient** members of the school community
- All students feel confident in taking **responsibility** for their GCSE studies
- Good communication between all **three** stakeholders - PARENTS/CARERS, STUDENTS and SCHOOL

# Exam Dates

Key dates:

**Mocks – January 14<sup>th</sup> – February 3<sup>rd</sup>**

- In exam rooms under exam conditions

Important for:

- progress reports – February 26<sup>th</sup>
- Parent / Carer Evening discussions – February 27<sup>th</sup>

Students may complete other assessments in class.

**May / June** - The real GCSEs begin! Student timetables for these exams will be distributed around Easter time.



**Great Marlow School**

*Excellence • Compassion • Integrity*

# Science

**Head of Science: Mrs Jen Webster**  
**[jwebster@gms.bucks.sch.uk](mailto:jwebster@gms.bucks.sch.uk)**

**Opportunities are Created • Potential is Realised • Excellence is Achieved**

# AQA Trilogy Science Overview

- Combined Science course
- 6 exams to be taken Summer 2024 (2 per Science)
- 75 minutes each
- 16.7% weighting (no coursework)
- H tier grades 9-4, F tier grades 5-1
- Students will be awarded a consecutive paired grade i.e. 9-9, 9-8, 8-8, 8-7 etc

# AQA Separate Science Overview

- E1, H1 and K1 ONLY -separate sciences
- 6 exams to be taken Summer 2024 (2 per Science)
- 105 minutes each
- Each exam is a 50% weighting (no coursework)
- H tier grades 9-4, F tier grades 5-1
- Students will be awarded a single grade for each Science e.g Biology grade 6, Chemistry grade 7, Physics grade 8.





# Key Dates – mock exams

The Science mock exams will take place in January. They will consist of three Science papers (one in each of the disciplines). More exam practice will take place during class, homework and revision time.

Exam	Date
Biology paper	Thursday 16 <sup>th</sup> January 2025
Chemistry paper	Tuesday 28 <sup>th</sup> January 2025
Physics paper	Thursday 30 <sup>th</sup> January 2025



# Key Dates – terminal exams

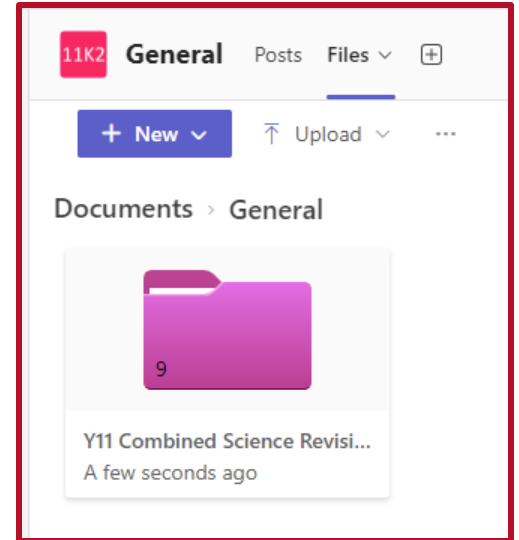
The Science exams will take place in May/June. They will consist of six Science papers (two in each of the disciplines). More exam practice will take place during class, homework and revision time.

Exam	Date
Biology paper 1	Tuesday 13 <sup>th</sup> May 2025
Chemistry paper 1	Monday 19 <sup>th</sup> May 2025
Physics paper 1	Thursday 22 <sup>nd</sup> May 2025
Biology paper 2	Monday 9 <sup>th</sup> June 2025
Chemistry paper 2	Friday 13 <sup>th</sup> June 2025
Physics paper 2	Monday 16 <sup>th</sup> June 2025



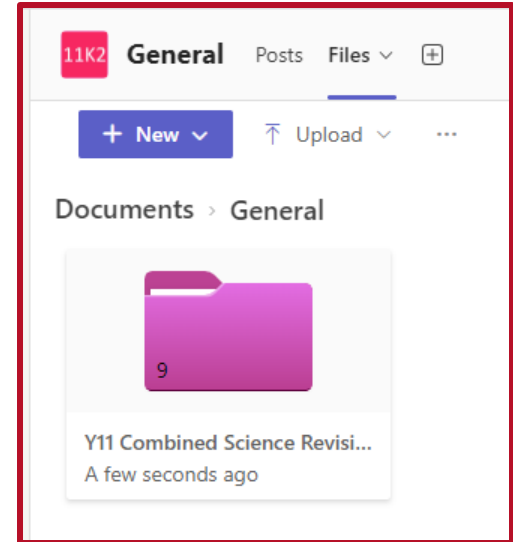
# School-provided Revision Resources

- > Ms Teams
- > General
- > Y11 Science Revision Folder
  - Exam Questions
  - Revision Mats
  - Knowledge Organisers
  - Glossaries
  - Revision Checklists



# School-provided Revision Resources

- > Ms Teams
  - > General
  - > Y11 Science Revision Folder
    - Students need to revisit the required practicals.
    - At least 15% of the paper will assess this knowledge.
- Videos links of these have been added to Teams.**



# School-provided Revision Resources

PLCs (Personal Learning Checklists) are used at the beginning of every topic. These should be used as a revision checklist.



Login = Student name

AGA Separate Science PLC,  
Physics Topic 4.5 Forces

I can do the following...	Grade	After		
		Red	Amber	Green
Describe a force.	3			
Explain what is meant by a vector quantity.	4			
Explain what is meant by a scalar quantity.	4			
State examples of vector and scalar quantities.	2			
Explain how to represent a vector quantity.	4			
Give examples of contact and non-contact forces.	2			
Describe the effects of forces in terms of changing the shape and/or motion of objects.	3			
Describe examples of contact forces explaining how the force is produced.	3			
Describe examples of non-contact forces and state how the force is produced.	3			
Define weight and mass and explain the difference between them.	2			
Rearrange and apply the equation $w = mg$ .	3			
Give the correct units of weight and mass.	3			
Convert quantities into SI units (e.g. grams into kilograms).	3			
Describe the relationship between weight and mass.	3			
Describe what is meant by 'centre of mass'.	3			
Explain what a resultant force is.	4			
Calculate resultant force.	4			
Draw free-body diagrams to represent resultant force (HT only).	7			
Illustrate how to find a force from a vector diagram (HT only).	7			
Draw force diagrams to show how a single force can be resolved into two components (HT only).	8			
Calculate the horizontal and vertical component of a single force that acts on an object (HT only).	8			
Define work done.	2			
State the units of work.	2			
Calculate the work done by a force on an object when given the magnitude of the force and the displacement of the object.	4			
Rearrange the equation $W = F \times s$ to find any unknown value.	3			
Explain the relationship between work done and force applied.	4			
Identify the transfers between energy stores when work is done against friction.	3			
Explain why the stretching of a material can only occur if more than one force is acting on the object.	4			
Draw force diagrams to show how the forces are acting on the object and how the stretching, bending or compressing occurs.	3			

# Additional Revision Resources



# Additional Revision Resources

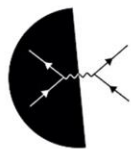


Exam papers  
Mark Schemes  
Scheme of Work



PHYSICS & MATHS TUTOR

Worked examples  
Topic notes  
Exam papers & Mark Schemes



**Physics Online** ◦

@PhysicsOnline · 183K subscribers · 1K videos  
GCSE and A Level Physics Revision Videos.  
[physicsonline.com](http://physicsonline.com) and 2 more links

Subscribe



**Cognito** ◦

@Cognitoedu · 844K subscribers ·  
Hi - we make video lessons for sci  
[cognitoedu.org/home](http://cognitoedu.org/home)

Subscribe



**FuseSchool - Global Education** ◦

@fuseschool · 836K subscribers · 963 videos  
FuseSchool - Global Education ...more  
[patreon.com/fuseschool](http://patreon.com/fuseschool) and 5 more links

Subscribe



**Science Shorts** ◦

@ScienceShorts · 241K subscribers · 404 videos  
Lessons and revision tips to help you in your GCSE  
[scienceshorts.net](http://scienceshorts.net)

Subscribe



**Great Marlow School**

*Excellence • Compassion • Integrity*

# English

**Head of English - Ms Timon**  
**[rtimon@gms.bucks.sch.uk](mailto:rtimon@gms.bucks.sch.uk)**

**Opportunities are Created • Potential is Realised • Excellence is Achieved**



# English Exam Papers

## 4 EXAM PAPERS:

**LANGUAGE PAPER 1 – 1 HOUR AND 45 MINUTES**

**LANGUAGE PAPER 2 – 1 HOUR AND 45 MINUTES**

**LITERATURE PAPER 1 – 1 HOUR AND 45 MINUTES**

**LITERATURE PAPER 2 - 2 HOURS AND 15 MINUTES**

## LANGUAGE PAPER 1 – 1 HOUR AND 45 MINUTES

- Fiction focus
- 1 extract
- 4 questions on **reading comprehension**
- 1 question on **writing a description/ story**

## LANGUAGE PAPER 2 – 1 HOUR AND 45 MINUTES

- Non-fiction focus
- 2 extracts (one modern extract; one 19<sup>th</sup> Century extract)
- 4 questions on **reading comprehension**
- 1 question on **writing an article/ letter/ blog/ leaflet**



# LITERATURE PAPER 1 – 1 HOUR AND 45 MINUTES

## Romeo and Juliet (34 marks)

- How does Shakespeare present key **characters and themes**?
- How have **language, structure, form** shaped meaning?
- How does **context** influence the text?

## A Christmas Carol (30 marks)

- How does Dickens **key characters and themes**?
- How have **language, structure, form** shaped meaning?
- How does **context** influence the text?



# LITERATURE PAPER 2 – 2 HOURS AND 15 MINUTES

## An Inspector Calls (34 marks)

- How does Priestley present **key characters and themes**?
- How have **language, structure, form** shaped meaning?
- How does **context** influence the text?

## Love and Relationships Poetry (30 marks)

- How do the poets present different types of love/relationship?
- How have **language, structure, form** shaped meaning?
- How does **context** influence the poems?

## Unseen Poetry (32 marks)

- What is the writer trying to say?
- How have **language, structure, form** shaped this meaning?
- How can **language and structure** be used to describe?

[96 marks]



# Y11 January MOCKS – 2 papers

## LANGUAGE PAPER 2 – 1 HOUR AND 45 MINUTES

- Non-fiction focus
- 2 extracts
- 4 questions on **reading comprehension**
- 1 question on **writing an article/ letter/ blog/ leaflet**

[80 marks]

## LITERATURE PAPER 1 – 1 HOUR AND 45 MINUTES

- Romeo and Juliet (34 marks)
- A Christmas Carol (30 marks)

[64 marks]

# Resources

- Your class books and notes – this is the first port of call!
- TEAMS – a huge amount of revision work is built up throughout the year. Teaching slides of key material is available all year.
- Massolit
- Seneca
- BBC bitesize
- YouTube videos (Mr Bruff)
- British Library online
- AQA revision guides
- Past papers and marks schemes at [Aqa.org.uk](https://www.aqa.org.uk)

## WAYS TO REVISE ENGLISH

- Small **achievable** chunks
- **Start small** and work up
- Divide the content into **sections** (characters, themes, context, Q2 of a past paper)
- Aim to revise **one-word quotes**, not long sentences
- Remember by **copying** – write down key aspects **3 times**.

## Period 6 sessions

- Some English teachers may be running additional sessions in the lead up to the January mocks - it is up to the pupils to take the responsibility to attend these. It is extremely beneficial to attend these sessions. *Period 6 sessions will run before the actual May/June 2025 exams.*

*We are here to help the pupils, not only develop the skills, but to feel confident. A conversation, quick pointers after a lesson, an email if unsure - every little helps.*



**Great Marlow School**

*Excellence • Compassion • Integrity*

# Maths

**Head of Maths - Miss Guy**

**[mguy@gms.bucks.sch.uk](mailto:mguy@gms.bucks.sch.uk)**

**Opportunities are Created • Potential is Realised • Excellence is Achieved**



# Hello!

Miss Guy

[mguy@gms.bucks.sch.uk](mailto:mguy@gms.bucks.sch.uk)

# Exam Info

GCSE - 3 Papers

1 non calculator and 2 x calculator

All papers are 1 hour 30 minutes

January mock – same format

EMC – Set 1 ONLY

2 papers 1h 15 one each n/calc and calc



# Tiering and classes

Students taught in house blocks

Within each of these there are four sets

Set 1 & 2 – Higher tier (5 – 9)

Set 3 & 4 – Foundation (1 – 5)

# Revision

- Little and often
- Doing with showing working
- Dr Frost Maths/Sparx
- Extra curricular revision sessions are laid on for all students
- Timetable of teachers focusing on topics uploaded to TEAMS



# How can I improve?

## Approaches to improving at maths

- Doing maths
- Asking for help
- Understanding the process of learning

# Equipment (GRRRR!)

- Pen
- Pencil
- Ruler (that you can read off!)
- Rubber
- Mini whiteboard pen
- Protractor
- Set of compasses (for constructions)
- Scientific calculator



# How can you help?

Make sure your child comes to school!

Having a positive attitude to maths results in strong performance and attainment

Understanding mistakes are part of learning

Consistent practice WILL improve performance



**Great Marlow School**

*Excellence • Compassion • Integrity*

# Communicating with School

**Opportunities are Created • Potential is Realised • Excellence is Achieved**



# Communication

How can we communicate?

- **Telephone**
- **E-mails**
- **Microsoft Teams**
- **Xpressions app**
- **School website**
- **Progress Reports**

**Director of Learning for Year 11:**

Mrs V. Bennett

**Year 11 Student Support Officer:**

Mrs J. Spencer

# Points of contact

**Concern about a subject specific issue** – Subject Teacher- if you are unsure who this is, please email [info@gms.bucks.sch.uk](mailto:info@gms.bucks.sch.uk) and this can be forwarded to the relevant teacher

**Concern about setting/classes** – Head of Department

**Personal or Social difficulties** – Form Tutor, Student Support Officer, Director of Learning

**Concerns across a range of subjects, attitude to learning** – Mrs V. Bennett (Director of Learning Year 11)

# Form Tutors

<b>11K1</b>	Mrs D Chenery/ Mrs C Lamming (Tues and Thurs)
<b>11K2</b>	Mr I Philpott
<b>11K3</b>	Mr R Pulsford
<b>11H1</b>	Mr J James
<b>11H2</b>	Miss G Muttitt
<b>11H3</b>	Mr M Ouedraogo
<b>11E1</b>	Miss M Ashby
<b>11E2</b>	Mrs A Perman/ Miss R Timon (Wed)
<b>11E3</b>	Mrs D Simon/ Mr S Ross (Tues/ Wed)

Email addresses: **[Initial][Surname]@gms.bucks.sch.uk**

# Key staff

**Director of Inclusion :** Mrs V Todd

**SEN Exam Access Arrangements:** Miss K Burnard

**Attendance Officer:** Mrs S Radnedge

**Pupil Premium Coordinator:** Mrs A Gifford

**Careers Officer:** Mrs M Brunt

**Exams Officer:** Mrs A Smith



**Great Marlow School**

*Excellence • Compassion • Integrity*

# Exam Preparation

**Opportunities are Created • Potential is Realised • Excellence is Achieved**

# Exam Routines in School

**Students gather in canteen or G block covered area**

Students will know which, based on access arrangements

**Students place phones, watches and earphones in wallets**

Consequences beyond school if these are taken into the exam hall

**Student names called out in order of seating**

**Students move towards the exam room, place belongings outside and head to assigned seat**

**Students to remain under exam conditions until they are back in the canteen after the exam**

Parents / Carers will be emailed with relevant exam rules – important to go through these with the students - consequences beyond school if they are not followed

Subject	Information
Business	From January 2025, every Wednesday from 8-8:30am
English	Invite only - teachers will let pupils/classes known when sessions are available.
Drama	1 hour group rehearsal once a week - day to be decided by group and teacher
MFL	Monday - Spanish with MCL Monday/Weds - French with TKN Thursday - Spanish with TKN
D&T	3pm-4pm Mon-Thurs - Any student any day
Food Preparation & Nutrition	3pm-4pm - Any student any day, by prior arrangement
Hospitality & Catering	3pm-4pm - Any student any day, by prior arrangement
PE	3pm-4pm Mondays (After Christmas)
Geog	Invite only. Thursday mornings from 7.30am - 8.15am. Starting Thursday 14 <sup>th</sup> November. Invite only. 2 revision sessions - Monday 11 <sup>th</sup> November and Wednesday 13 <sup>th</sup> November. 3pm - 4pm. Geog TV Club - Thursday. A13. Break 2
Music	Mondays after school, 3-4pm in B12.
RS	Tuesday break 1, M1
Art	Period 6 drop ins most afternoons afterschool 3-4pm for independent working and catching up. Each teacher will confirm the day with their class.
History	From Monday 2 <sup>nd</sup> December until mock examinations - Elizabeth I paper. Break 2 in T13. Revision scheduled published in January for remaining papers. All Year 11 history students welcome.
Maths	After school revision Tuesday/Thursday in B4 Break 1 support for Sparx and revision support every day except Tuesday

More sessions will likely be added in the Spring/Summer Terms

# RSHE Revision Programme & Elevate

## **Schedule:**

1. Motivation-what are your aims/goals
2. Getting started- Elevate
3. Getting started- creating a revision timetable
4. Importance of homework/classwork and preparation
5. Getting started- revision environment, sleep and diet, coping with stress
6. Revision techniques- looking at a range of techniques
7. Get to know the exams- what do the papers look like?
8. Know your subjects
9. On the Day
10. Revision sessions- run by a mixture of tutors and subject teachers





Great Marlow School

*Excellence • Compassion • Integrity*

# Supporting from home

Opportunities are Created • Potential is Realised • Excellence is Achieved

# Finding Information

**1. Revision Page [here](#) (School Website)**

Revision Guide, Top Tips, Y11 GCSE  
Information Booklet

**2. Learning ladders**

Curriculum – [departments AZ](#) - Link to  
departments

**3. MS Teams**

**4. School Google [Calendar](#)**

**5. Examination Dates [preview](#)**



# List of key subject dates

Subject	Information
Media	15/11/24 - Final Deadline for 300-word Statement of Intent 13/12/24 - Deadline for first drafts of practical work (either print or video advertisements) 28/02/25 - Final Deadline for practical work
PE	<b>Coursework Deadlines:</b> RPU/ GMU class Thurs 9 <sup>th</sup> Nov SGR/ EBD class Fri 29 <sup>th</sup> Nov <b>Off-Site Practical Videos &amp; Logbooks Deadline:</b> Friday 7 <sup>th</sup> February <b>On-Site Practical Logbook Deadline:</b> Friday 21st March
Art	<b>w/c 2<sup>nd</sup> December 2024:</b> Component 1 mounting and refinements start (mounting materials to be purchased through Wisepay) <b>w/c 6<sup>th</sup> January 2025:</b> <u>Component 1 final coursework portfolio submission</u> . Distribution of exam paper from AQA and launch of Externally Set Task project (13 weeks) <b>Fri 25<sup>th</sup> April 2025:</b> Art and Design GCSE 10-hour controlled time session 1 (5 hours) Component 2 EST to be kept in secured conditions at school (further work no longer permitted in sketchbooks). <b>Monday 28<sup>th</sup> April 2025:</b> Art and Design GCSE 10-hour controlled time session 2 (5 hours). <u>Final submission of Component 2 EST.</u>
Child Development	w/c 24 March - NEA for Child Development needs to be submitted during that week.
Drama	November introduction to Component 2 Exam. Wednesday 27 <sup>th</sup> November- Theatre Visit in preparation for Live Theatre Exam March 2025- Component 2 Exam- Date to be confirmed by visiting examiner Thursday 8th May- Component 3 Written Exam ( Live Theatre and Find Me)
Citizenship and politics	January 2025: Paper 2 mock examination. February-March 2025: Theme E - Taking Citizenship Action - Students work in groups to complete their citizenship action.
Music	Friday 13 December: Solo and Ensemble Performance (Unit 1) Friday 14 February: Free and Set Brief Composition (Unit 2)

# Promoting Wellbeing

Students need-

1. **Quality sleep** - no phones in bedrooms, reduced screen time before bed
2. A **good** diet
3. The right working environment
4. Planned **breaks**
5. Continued **physical activity/hobbies**
6. Promoting the importance of **planning** and **preparing** now to reduce stress later



# Promoting Wellbeing

Limited use of mobile phones and social media.

Studies have shown that our use of phones and social media reduces our ability to learn how to concentrate for long periods of time

Students need to take the time to practice the skills of concentration- e.g. reading, physical activity, yoga etc.



# Promoting Wellbeing

- Communicate openly with your child
- Help them find resources and revision material (website and Teams)
- Understand their fears and concerns
- At times, just “be there”
- Help promote positive well-being
- Appreciate, acknowledge & motivate
- Catch them doing the right things and praise them
- Help promote high attendance and punctuality





# Bucks Mental Health Partnership

To help support the Mental Health of our young people, Great Marlow has teamed up with the Bucks Mental Health Support Team (MHST).

Session 2 - Anxiety **Wednesday 4<sup>th</sup> December – 6 pm**

Session 3 - Low Mood **Monday 3<sup>rd</sup> March – 6 pm**

Session 4 - Self-Harm **Wednesday 30<sup>th</sup> April – 6 pm**

Details of how to sign up for the Parent Sessions delivered by MHST will follow in a separate, later correspondence





**Great Marlow School**

*Excellence • Compassion • Integrity*

# Next Steps

**Opportunities are Created • Potential is Realised • Excellence is Achieved**



# Future Planning

- **RHSE Careers/revision Topics**
- **Elevate session on 26<sup>th</sup> November.**
- **Careers meetings:**  
Every Y11 student will meet with Careers Lead in school hours
- **Sixth Form Applications:**  
Open now – emailed to students for students – deadline Friday 6<sup>th</sup> December





Great Marlow School

Excellence • Compassion • Integrity

...and finally

Thank you for all your  
support

Opportunities are Created • Potential is Realised • Excellence is Achieved