

Welcome to  
Year 12  
Information  
Evening

**FOR PARENTS AND CARERS**

**ALL YOU NEED TO KNOW ABOUT YOUR CHILD'S  
PROGRAMME OF STUDY**

# Vision and Values

---

Ultimate aim: To ensure all students can access their post-19 pathways, maintain a positive ATL and achieve their best in their year 13 examinations.

Year 12 students are identified as compassionate, respectful and resilient members of the school and wider community.

All students feel confident in taking responsibility for their A level or BTEC studies.

Good communication between all three stakeholders - PARENTS/CARERS, STUDENTS and SCHOOL.

# 6<sup>th</sup> Form Team

---

Mr Hollyman:  
Director of  
Learning for KS5  
(Head of 6<sup>th</sup> Form)

Miss Jones:  
Deputy Head of  
6<sup>th</sup> Form

Mrs Evans:  
Intervention for  
Year 13

Mrs Paul: Mental  
Health Lead and  
6<sup>th</sup> Form support

Form Tutors

Mrs Brunt:  
Careers Advisor

# Year 12 Tutors

12K1 Room:G14 Mr Russell

12K2 Room: C14 Mr Sacre

12H1 Room: M11 Mrs Houston and Mrs Woodbridge

12H2 Room A2: Mrs King

12E1 Room G12: Mrs Broadbent and Mrs Lewis

12E2 Room E2: Mr Chapman and Mrs Burke

# Ethos

---

7 R's

---

**Respect**

---

**Reflection**

---

**Responsibility**

---

**Resourcefulness**

---

**Readiness**

---

**Resilience**

---

**Reading**

---

# X Factor Skills

---



# Access Arrangements



Great Marlow School  
Excellence • Compassion • Integrity

There are a number of access arrangements which support students with a wide range of needs such as: -

- Cognition and learning needs, specific learning needs – dyslexia, processing difficulties
- Autistic Spectrum Disorder, speech, language and communication needs
- Sensory and physical needs – vision impairment, physical disability, hearing impairment

**A diagnosis does not lead directly to an access arrangement**

# Access Arrangements



Great Marlow School  
Excellence • Compassion • Integrity

*'Access arrangements / reasonable adjustments should be processed at the **start of the course**...should be able to process applications at the start of or during the first year of a two-year GCSE course having firmly established a picture of need and normal way of working during Years 7 to 9.'* (AARA 4.2.4)

*'A **centre** must make decisions on appropriate access arrangements for their candidates. Although professionals from other organisations **may give advice**, they **cannot** make the decision for the centre.'* (AARA 4.2.1)



# Access Arrangements



Great Marlow School  
Excellence • Compassion • Integrity

For students who had Access Arrangements for their GCSEs, we have to apply again in Year 12:

*‘When a candidate with an existing Form 9 progresses from GCSE to GCE AS, A level and/or other Level 3 qualifications, a new online application for 25% extra time must be processed. So as not to give an unfair advantage, the SENCo must have available evidence, which clearly shows that 25% extra time is still needed for GCE AS, A level and/or other Level 3 qualifications.’ (AARA 5.2.3)*

# Access Arrangements



Great Marlow School  
Excellence • Compassion • Integrity

There are a number of access arrangements which support students with a wide range of needs such as: -

- Cognition and learning needs, specific learning needs – dyslexia, processing difficulties
- Autistic Spectrum Disorder, speech, language and communication needs
- Sensory and physical needs – vision impairment, physical disability, hearing impairment

**A diagnosis does not lead directly to an access arrangement**

# Access Arrangements



**Great Marlow School**  
Excellence • Compassion • Integrity

**Core evidence is from teachers**, without this, AA cannot be pursued,

*‘...detail the candidate’s current difficulties to show how they impact on teaching and learning and performance in examinations, summarising evidence of feedback from teachers and/or support staff’ (AARA 5.4)*

# Access Arrangements



Great Marlow School  
*Excellence • Compassion • Integrity*

GCSEs and Year 12 exams are a vital part of identifying the potential for needing access arrangement.

We can still gather evidence in Year 13, but the deadline to raise potential need for Access Arrangements is **December 2025**.

# Safeguarding and Wellbeing



**From ASH (Action on smoking and Health)**

- **In 2023 20.5% of children had tried vaping, up from 15.8% in 2022 and 13.9% in 2020. 2025 figures will be even higher.**
- **Vaping – can contain harmful and potentially harmful substances, including:**
  - **Nicotine**
  - **Flavourings such as diacetyl, a chemical linked to a serious lung disease**
  - **Volatile compounds**
  - **Cancer-causing chemicals**
  - **Heavy metals such as nickel, tin, and lead**
  - **SPICE – 1 in 5 illegal vapes contain other substances other than advertised**

# Safeguarding and Wellbeing



- Online Safety – [nationalonlinesafety.co.uk](https://nationalonlinesafety.co.uk) – free resource for parents/carers
- As parents be curious – Content, Contact, Conduct and Commerce
- Age limits are in place for a reason
- Less is more – less time online is healthier
- Screen time should be reduced before sleep routine



# Key Staff Members



Great Marlow School

*Excellence • Compassion • Integrity*

## Neil Maguire

Deputy Headteacher  
Designated Safeguarding  
Lead (DSL)



## Karen Craig

Assistant Headteacher  
Deputy DSL



## Anna Gifford

Safeguarding Officer  
(Designated Looked After)



## Guy Pendlebury

Headteacher  
Safeguarding



## Sheryl Paul

Safeguarding Officer  
(Mental Health Lead)



Opportunities are Created • Potential is Realised • Excellence is Achieved





# Safeguarding and Wellbeing



## **Sleep is Key**

- The developing brain of a teenager needs between 8 and 10 hours of sleep every night. The effects of chronic (ongoing) sleep deprivation may include:
  - concentration difficulties
  - mentally 'drifting off' in class
  - irritability
  - impact on mental health and physical health
- Routines and habits – crucial for term time
- Reduce screen time before bed – at least a 30 minute gap



# **Safeguarding and Wellbeing**



## **Bucks Mental Health Partnership**

**To help support the Mental Health of our young people, Great Marlow has teamed up with the Bucks Mental Health Support Team (MHST).**

### **Workshop evenings**

**Promoting positive behaviours - Tuesday 8th October 6pm**

**Anxiety - Wednesday 4th December 6pm**

**Low mood - Monday 3rd March 6pm**

**Self-harm - Wednesday 30th April 6pm**

**Details of how to sign up for the in person Parent Sessions delivered by MHST will follow in a separate correspondence from Mrs. Paul.**

# Attendance and Legislation

New Statutory Duty for Attendance from 19.08.2024 - [Information for Parents](#)

- Any holiday-related absence taken that includes 10 sessions in 10 weeks, may result in a Penalty Notice. In this instance, a 'Notice to Improve' notification will not be issued beforehand.
- We recognise that these Penalty Notices may be unpopular with families, but it is important to inform you of these changes promptly.
- Nationally, Headteachers are:
  - not permitted to approve term-time holidays except in genuinely exceptional circumstances, and
  - are to consider each application for a leave of absence individually before making our decision.
- The law clearly expects Headteachers to enforce these penalties strictly.
- GMS are currently reviewing our Attendance Policy – will be shared

# Enrichment Opportunities

- *Senior Prefect Team*
- *Compulsory P.E (unless there is a timetable clash) on Wednesday period 5*
- *Young Enterprise*
- *Youth Sports Leaders*
- *Duke of Edinburgh Award*
- *Interact*
- *Year and School Council*
- *Rowing*
- *6th Form Teams*
- *Use of the Redgrave Centre*
- *Curriculum Support*
- *R.S Drop Down mornings*

**What is it  
that you  
want to do?**

# Curriculum Support

- All Year 12s will initially be timetabled into 2 lessons per week (CS).
- Opportunity to support younger students.
- Fantastic for CV and for the 6 Rs!
- Great for the rest of the school to see – raising profile of 6th Form.
- The aim is to enhance the experience of the 6th formers here at GMS, the students they support and the teachers



# Level 3 Sports Leaders

- Accredited Course
- Leadership Skills Foundation is the awarding body - Nationally recognised
- Worth 16 UCAS points / 12 credits
- Enables students to lead groups of children/adults for sporting activities by themselves - fully insured (once aged 18)
- When working as a Sports Leader, with the qualification you would receive increased pay
- Utilises CS as the practical and practical assessments
- Theory delivered each Wednesday period 5 / catch up session Thursday registration if missed
- 6 units, delivered across 1 year
- Huge number of skills will be developed and assessed, looked on favourably by employers or universities



## Topics in Term 1:

- Becoming a year 12 student
- Time Management
- Cultural Diversity and Inclusion
- Next Steps-Unifrog
- Alcohol and Safety
- Driving Safety





# Updated Timings of the normal school day

<b>8:25 am</b>	<b>Arrive through the green gates</b>
<b>8:30am</b>	<b>Registration</b>
<b>9 – 10am</b>	<b>Lesson 1</b>
<b>10 - 11am</b>	<b>Lesson 2</b>
<b>11 - 11:30am</b>	<b>Break 1</b>
<b>11:30 - 12:30pm</b>	<b>Lesson 3</b>
<b>12:30 - 1pm</b>	<b>Break 2 (canteen – library entrance)</b>
<b>1 – 2pm</b>	<b>Lesson 4</b>
<b>2 – 3pm</b>	<b>Lesson 5</b>

# Attendance – [ks5attendance@gms.bucks.sch.uk](mailto:ks5attendance@gms.bucks.sch.uk)

---

Students need to be in school from 8.30am to 3pm

Students who are late without a valid reason will attend a detention at breaktime. If this is missed, students will receive an after school-detention

Students are not allowed to leave the school site unless they have a prior engagement which has been authorised by your parents/carers

If students leave the school site, you must use the QR code to sign out or do so at reception



# Attendance Continued

---



All Study Periods  
must be attended



All P.E lessons must  
be attended



All timetabled  
lessons...



SOME STUDENTS IN  
YEAR 12 MAY BE  
ELIGIBLE FOR BURSARY  
FUNDING.



THE BURSARY IS  
DETERMINED BY  
HOUSEHOLD INCOME  
AND IS PROVIDED TO  
STUDENTS TO REMOVE  
BARRIERS AND  
OBSTACLES TO  
LEARNING.



FORMS WILL BE  
PROVIDED BY MRS  
MURRAY AND VIA  
TUTORS NEXT WEEK.  
FAMILIES WILL NEED TO  
COMPLETE THE FORM  
AND PROVIDE  
EVIDENCE.



RECEIPT OF THE  
BURSARY IS DEPENDENT  
ON ATTENDANCE.



STUDENTS MUST HAVE  
A BANK ACCOUNT IN  
WHICH MONEY CAN BE  
DEPOSITED.



STUDENTS WILL RECEIVE  
A SUM EACH TERM AND  
WILL HAVE TO RE-APPLY  
IN YEAR 13.

# Bursary

# Study Periods


- Independent study is the single most important contributing factor in the students' control that leads to success
- All students should be spending at least 2 hours for each subject area per week beyond the lesson/homework
- Study Periods are NOT Free Periods
- Every student in year 12 has two hours of compulsory Study Periods on their timetable each week
- Study Periods are conducted in the Silent Study Room and students are registered by a member of the Leadership Team
- Opportunity for students to develop their independent study such as: research; wider reading; completing coursework and homework; developing progress feedback; investigating post-KS5 options

# Intervention:

- Support for all students
- Half-termly student progress reports
- Focus Groups
- Sprint plan
- Open door policy
- Strong tutor team
- Experience in pastoral and academic matters



# Rules and Regulations

- Dress Code
  - Piercings
  - Use of mobile phones/headphones
  - Conduct around school
  - Role models/ambassadors
  - The tightrope of treatment
- 

# KS5 results 2024

---

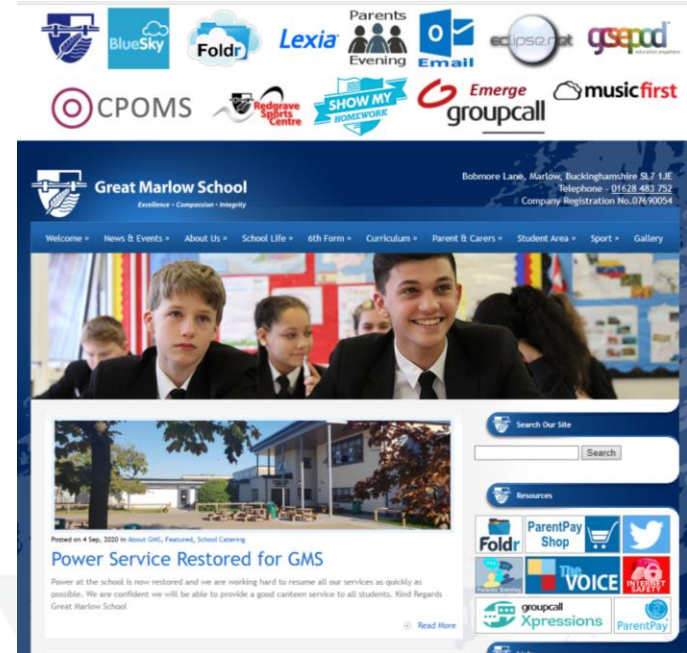
A\* to B  
= 30%

A\* to C  
= 61%

A\* to E  
= 98%

# GMS Website

<http://www.gms.bucks.sch.uk>



SIXTH FORM

# Helping students find their future

We bring all the available information into one comprehensive, user-friendly platform that helps students make the best choices, and submit the strongest applications.

We empower teachers and counselors to manage progression effectively.

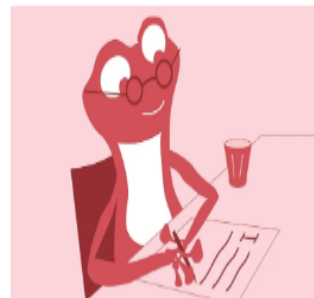
We partner with universities and employers to further support students to be successful.



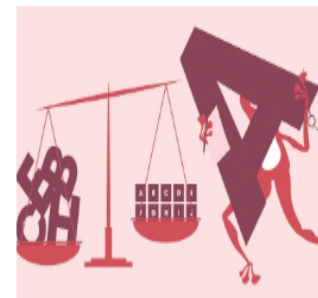
Start your [Personal Statement](#)

1.1%

## YOUR NEXT TASKS:



Start your [Personal Statement](#)



Reach the minimum character count  
for your [Personal Statement](#)



Get a teacher to mark your [Personal Statement](#) as 'Finished'



Finalise your 5 UK university [Definite Applications](#)

[See all your tasks](#) ▾

## Check out our UK Clearing tool

Search for the best Clearing courses for you, then secure your place by getting in touch with universities directly.

● No Clearing courses favoured

[Go to tool](#) ➤



## My commitment to you...



Great Marlow School

Excellence • Compassion • Integrity

- ✓ You are never bothering me
- ✓ I will usually respond within 24 hours to your communication
- ✓ You might not get the outcome you wish, but I will always provide one with the interests of the students at the forefront of my mind



**School = 01628 483 752**

**Mr Hollyman**

[ohollyman@gms.bucks.sch.uk](mailto:ohollyman@gms.bucks.sch.uk)

**Miss Jones**

[ajones@gms.bucks.sch.uk](mailto:ajones@gms.bucks.sch.uk)

**Mrs Evans**

[levans@gms.bucks.sch.uk](mailto:levans@gms.bucks.sch.uk)

Tutors: name prefix with the same school address

Attendance:

[KS5Attendance@gms.bucks.sch.uk](mailto:KS5Attendance@gms.bucks.sch.uk)

**Safeguarding**

[safeguarding@gms.bucks.sch.uk](mailto:safeguarding@gms.bucks.sch.uk)



# Key Dates – Autumn term



Great Marlow School

Excellence • Compassion • Integrity

- Thursday 18<sup>th</sup> September – Early close for Open Evening
- Wednesday 1<sup>st</sup> October – R.S Drop Down Day
- Thursday 9<sup>th</sup> October – Senior Maths Challenge
- Tuesday 6<sup>th</sup> November – 6<sup>th</sup> Form Open Evening